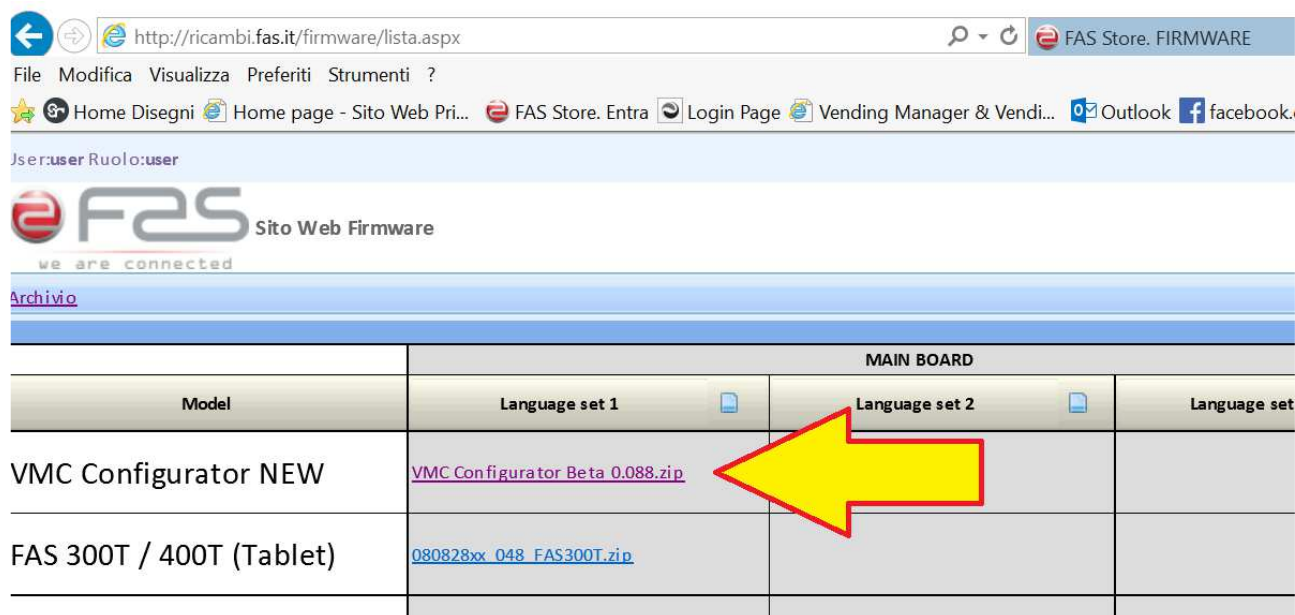


Installation procedure of the program "VMC Configurator Beta 0.088" on WINDOWS 10

Following the link for the download of the program "VMC Configurator Beta 0.088":

<http://ricambi.fas.it/firmware/login.aspx?ReturnUrl=%2ffirmware%2flista.aspx>

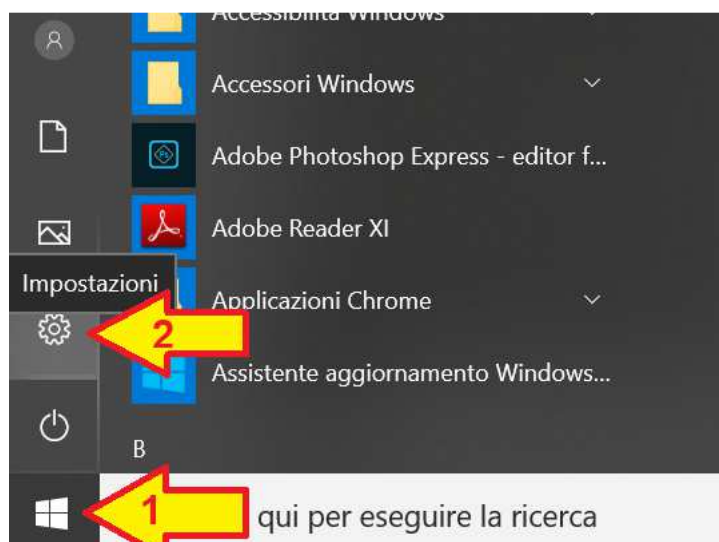


Model	MAIN BOARD		
	Language set 1	Language set 2	Language set
VMC Configurator NEW	VMC Configurator Beta 0.088.zip		
FAS 300T / 400T (Tablet)	080828xx_048_FAS300T.zip		

Cod. 855440 KIT FLASH KEY + KEY PROGRAMMER (USB)

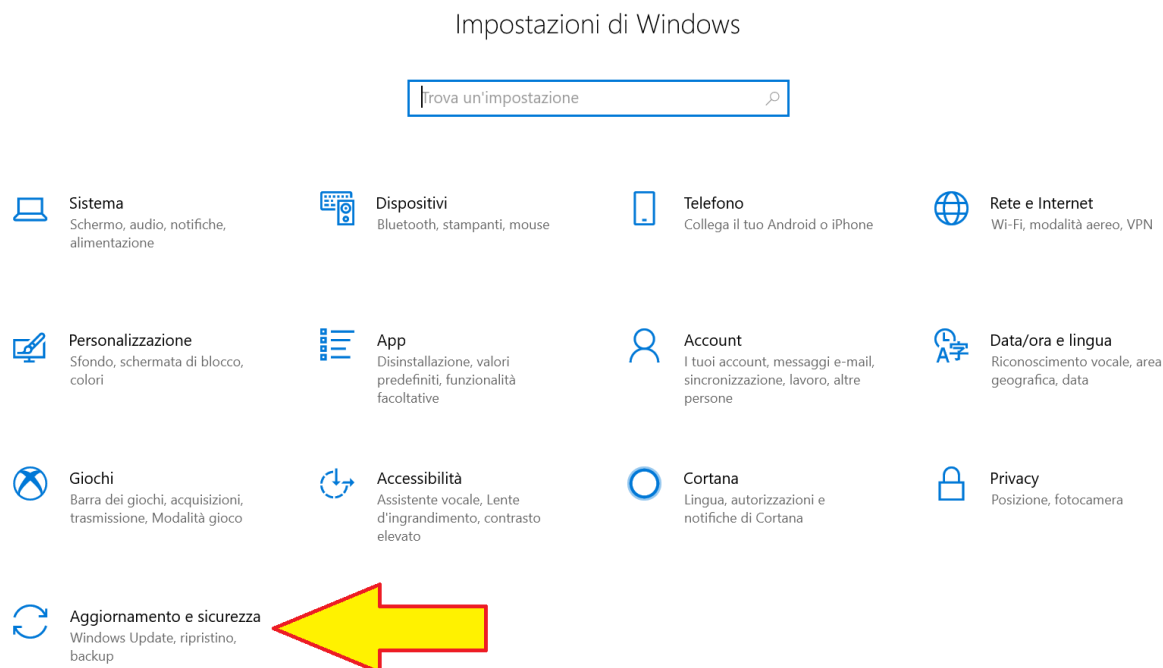


- 1) Connect the **KEY PROGRAMMER USB** to the **PC**.
- 2) Select Windows logo in the bottom left corner and click on "Settings" (arrow 1 and 2 below)

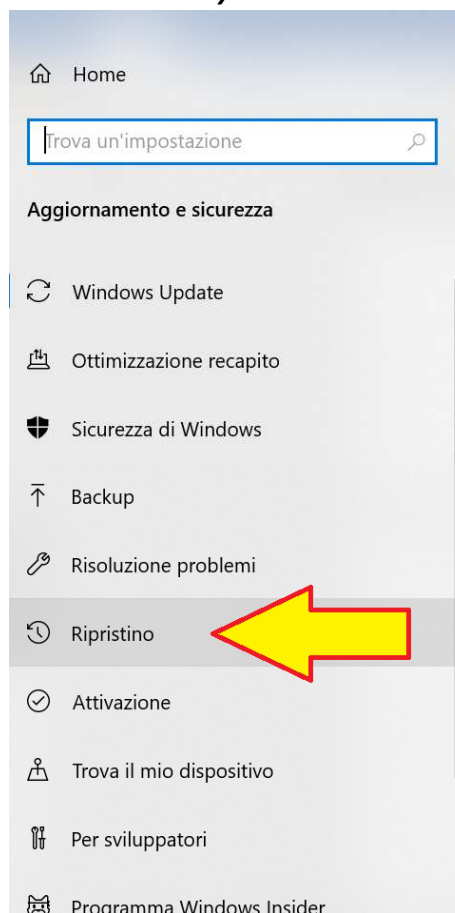


3) Choose **"Update & security"**

Impostazioni



4) Click on **"Recovery"**



Windows Update

*Alcune impostazioni sono gestite dall'organizzazione
[Visualizza criteri di aggiornamento configurati](#)



Gli ultimi aggiornamenti sono stati installati
Ultimo controllo: oggi, 08:04

[Verifica disponibilità aggiornamenti](#)

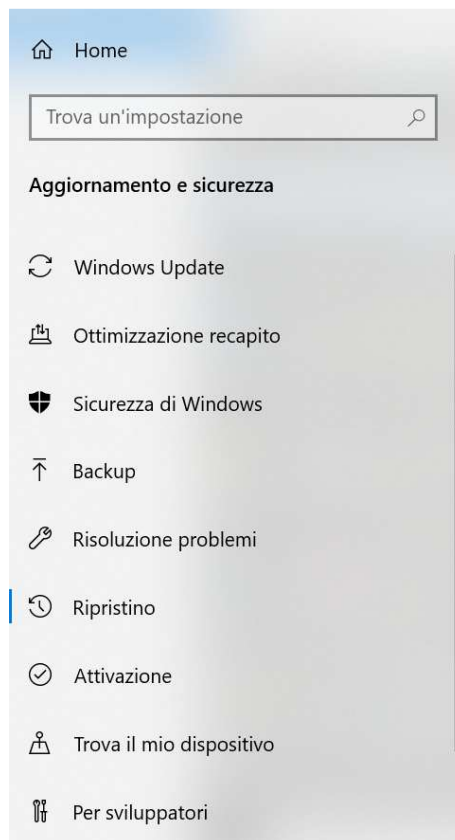
[Controllare gli aggiornamenti online da Microsoft Update.](#)

[Cambia orario di attività](#)

[Visualizza cronologia degli aggiornamenti](#)

[Opzioni avanzate](#)

5) Click on **“Restart now”**



Ripristino

Torna alla versione precedente di Windows 10

Questa opzione non è più disponibile perché il tuo PC è stato aggiornato più di 10 giorni fa.

Inizia

[Altre informazioni](#)

Avvio avanzato

Esegui l'avvio da un dispositivo o un disco (ad esempio un'unità USB o un DVD), cambia le impostazioni del firmware del tuo PC, modifica le impostazioni di avvio di Windows o ripristina Windows da un'immagine di sistema. Riavvierò il tuo PC.

Riavvia ora

Altre opzioni di ripristino

[Scopri come eseguire un'installazione pulita di Windows](#)

6) Click on **“Troubleshoot”**



7) Click on **“Advanced options”**



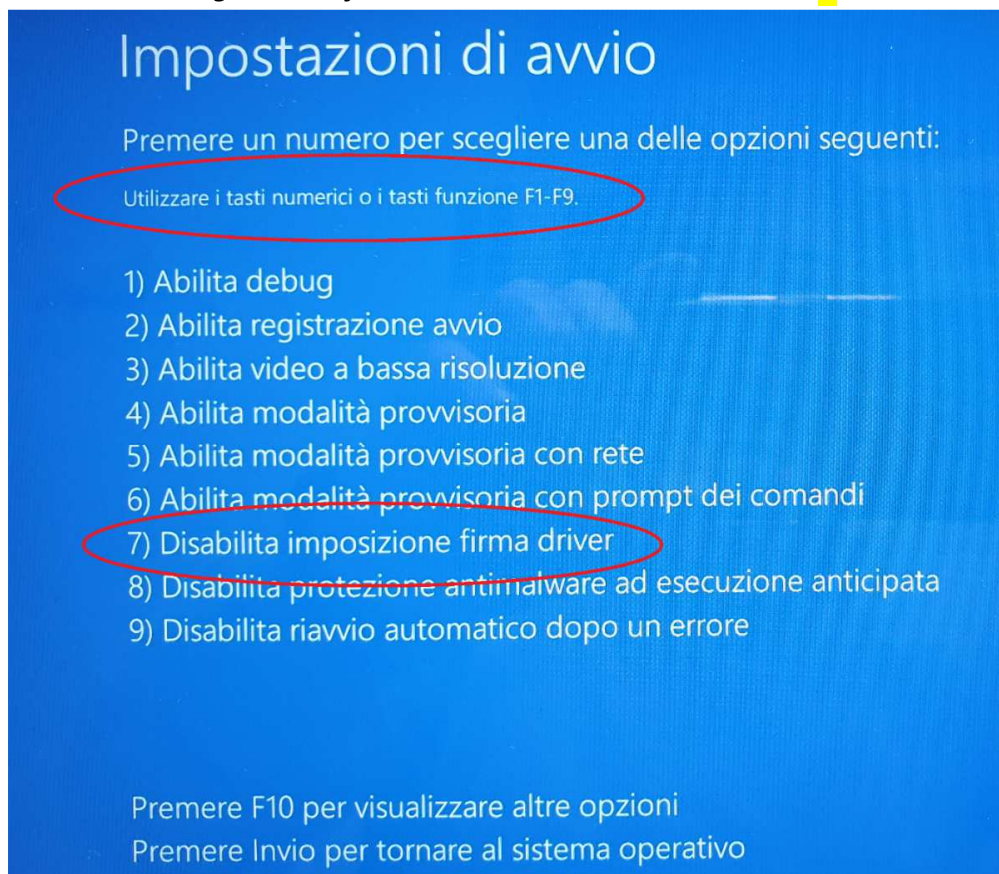
8) Click on **“Startup settings”**



9) Click on **“Reboot”** button



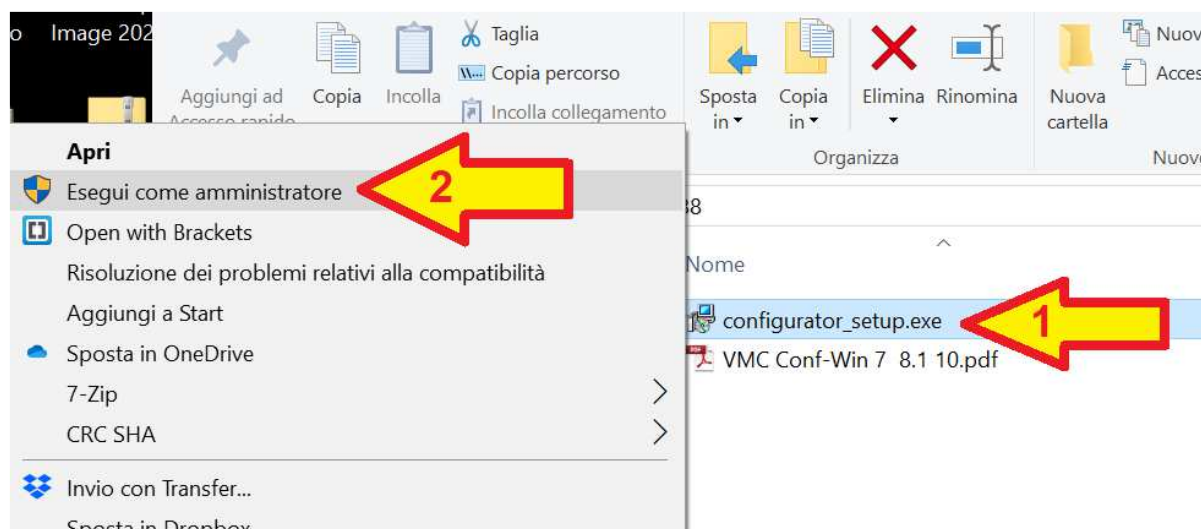
10) **“Disable driver signature enforcement”** – Press the number button **7** or the button **F7** on the keyboard



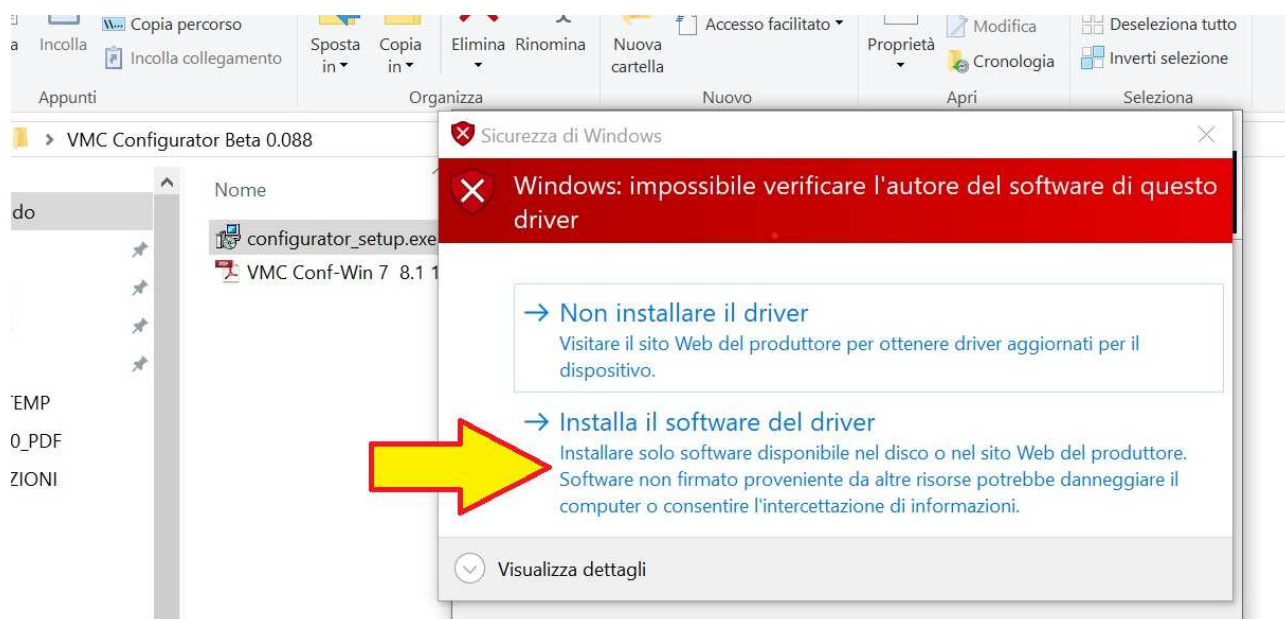
11) After the PC rebooting, proceed with the installation of the program "VMC Configurator Beta 0.088"

ATTENTION : keep the USB programmer connected to the PC during software installation.

Click with the right button of the mouse on the file "**configurator_setup.exe**" (arrow 1 below) and click on "**Run as administrator**" (arrow 2 below)



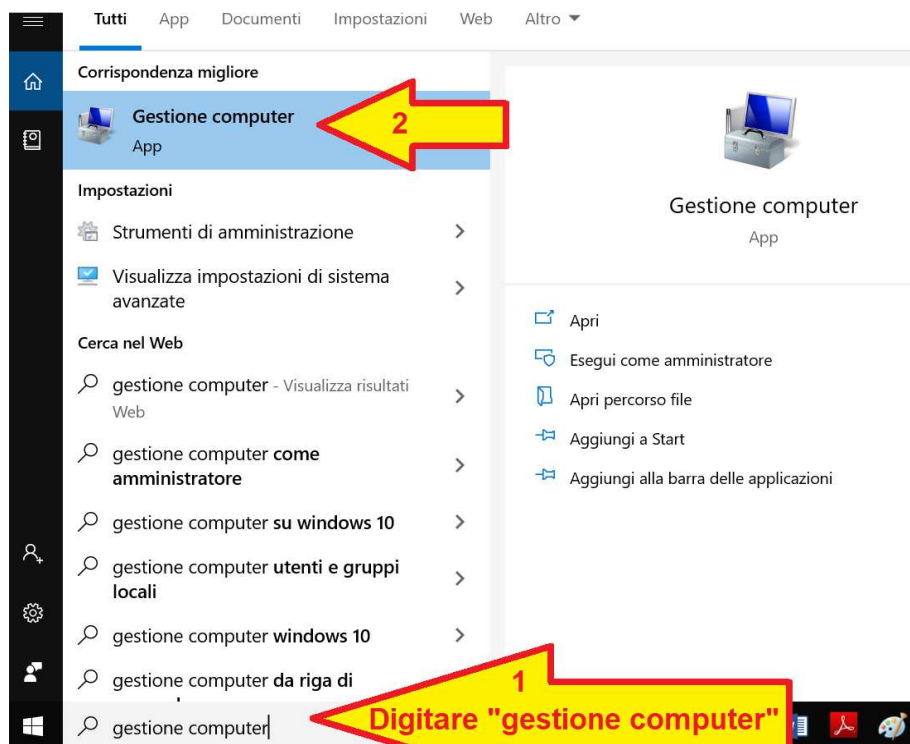
12) Proceed with the installation of the program and if during drivers installation will appear the following window, click on "**Install the software of the driver**" and go on.



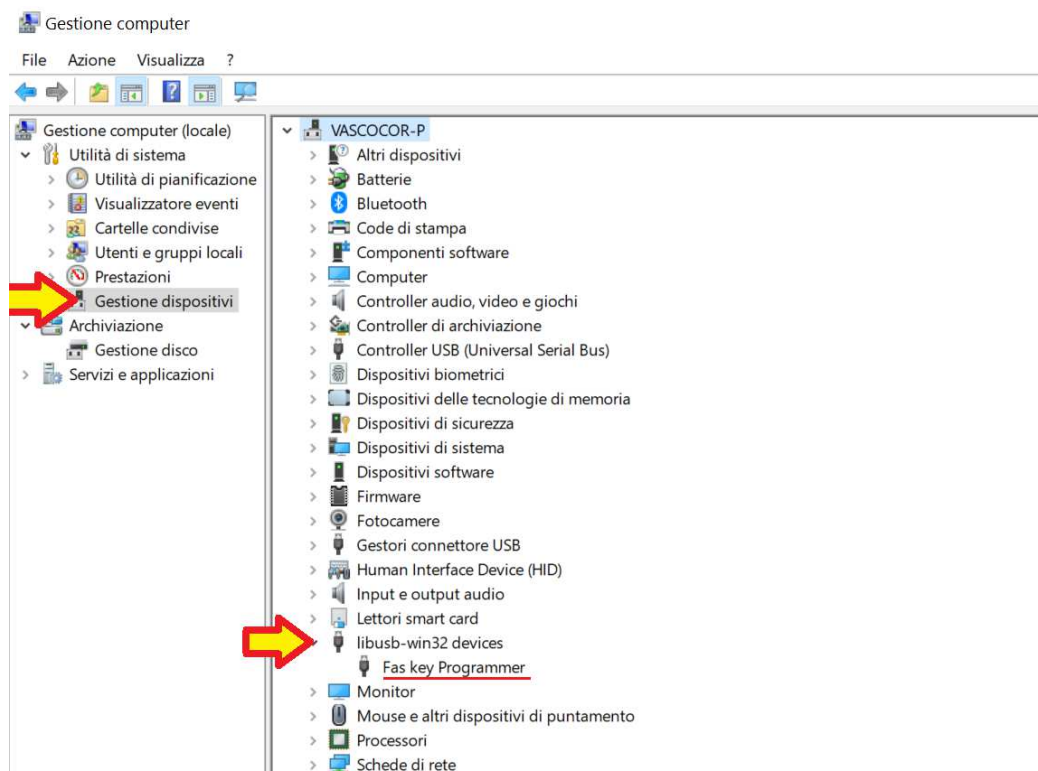
Once installation is finished, close the program "**Configurator**", disconnect from the PC the **KEY PROGRAMMER USB** and after some seconds connect it again.

On the black box of the USB PROGRAMMER USB the green light must be on.

- 13) Procedure for checking if the drivers of the KEY PROGRAMMER USB are correctly installed:
Open the **"Computer management"** by writing "Computer management" in the field of arrow below:



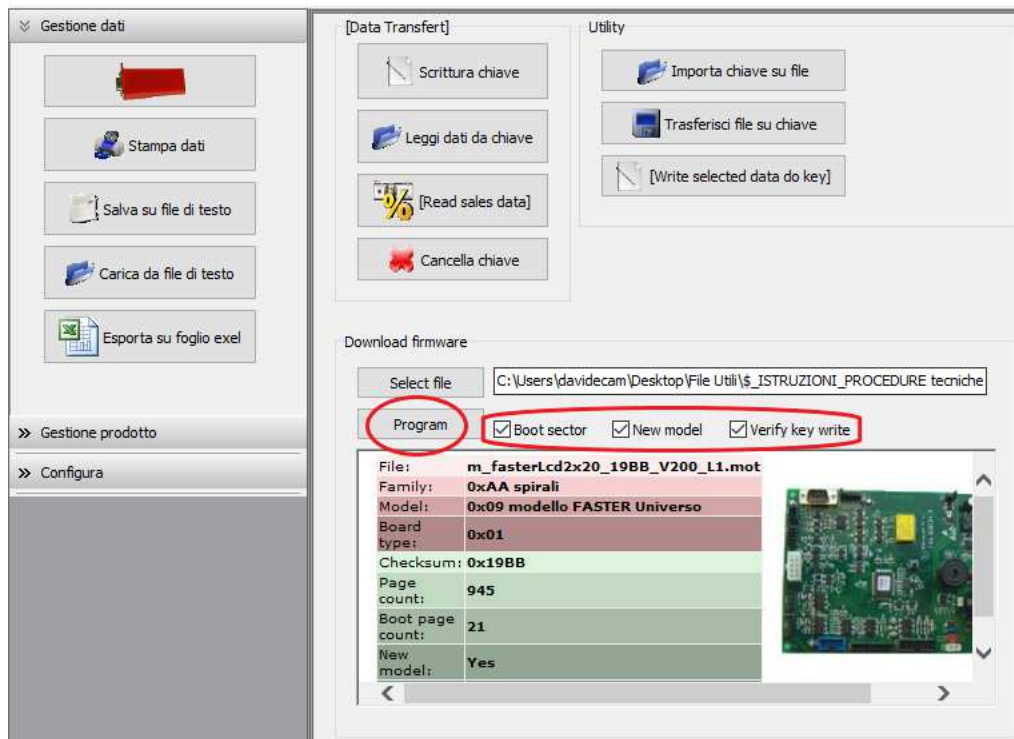
- 14) Verify the presence of the driver **"Fas key programmer"**



15) Open the program “**Configurator**” as administrator

In order to insert a firmware in the Flash Key click on “**Select file**” and select the desired firmware file, and enable all the three checkbox : Boot sector – New model – Verify key write.

Then click on Program. Once finish the updates and the verify, remove the key from the computer.



Turn off the machine and insert the flash key in the correct port of the board, then turn on.

On the display will appear “program on” and once finish the update will appear “program end”.

After that remove the flash key and the message “clearmemory” will appear on the display.

Then press the PB1 button in the middle of the main board and the machine will be ready to use showing at the display the message “Open door”.